



The new Mobile Assembly System (MAS)

Highly flexible and unique.



Highly flexible. Unique. Individual.

With the new Mobile Assembly System (MAS), we combine our proven series of Cleco tools and our tightening controller mPro-400SG to a unique, highly flexible system.

Standard features of the cart.

- 4-way power strip with easily accessible ports (default 2 x RS232, 1 x USB and 1 x Ethernet, 1 x System bus)
- 5m patch cable for Ethernet connection
- mPro-400GC-M with rotation and tilt adjustment
- Keyboard drawer with Keyboard
- Electronic components in lockable cabinet
- Main switch on the front
- Cable drum for power supply
- For up to 4 EC handheld tools (tightening modules are not included in the basic version)
- For up to 16 LiveWire cordless tools and/or intelligent torque wrenches!
- A maximum of 16 tools (EC-wired screwdriver, cordless screwdrivers LiveWire EC, intelligent torque wrench) can be operated with the cart!
- Tool holder for up to 3 EC handheld tools (angle head)
- 4 lockable drawers
- Lightweight wheels with brakes

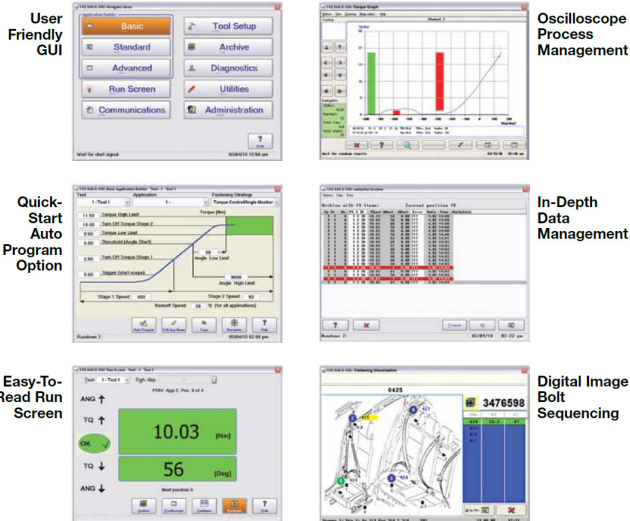


Tightening controller mPro-400SG.

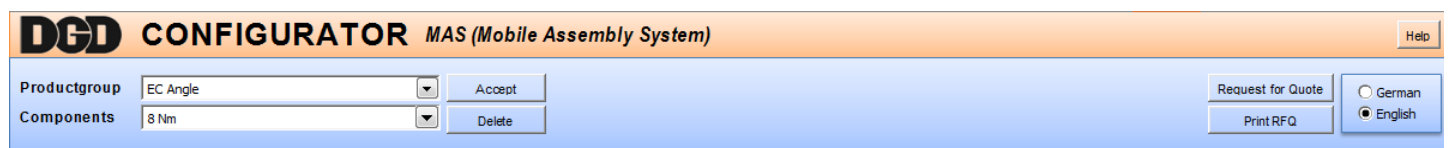
- 3 x RS232 ports for peripherals e.g. printers (type to be requested), intelligent torque wrenches, scanner...
- 4 x USB 2.0 ports (e.g. keyboard)
- 2 x Anybus CC interfaces for bus systems (PB, PN, Ethernet, DN)
- 2 x Ethernet RJ45 interfaces
- 1 x interface for internal system bus
- 2 x CF card slots including CF cards (1 x CF for parameter, 1 x CF for statistics)
- 8DI/8DO
- 12" touch panel
- Standard SG Software (S168813-1.2.4)
- OS9 (virus-secure operating system)
- No UPS required

Standardfeatures Software.

- The mPro-400SG software supports TorqueNet, our data acquisition and archiving software (Connection to other systems on request).
- Protocols are available for many standard products (e.g. Open Protocol).
- The tightening controller mPro-400SG works seamlessly with current protocols and offers significant performance advantages over conventional systems.
- Customized software on request.



DGD-Configurator.



- Simply configure your Mobile Assembly System. With the new DGD-Configurator no problem.
- Selection of our proven handheld tools by using the drop-down menu.
- After you have selected your tool, just specify the desired torque.
- The intelligent configurator will also inform you about incorrect selections.

Mobile Assembly System (MAS)



Overview

Plant network



European Power Tools Sales & Service Centers

Please note that not all locations may service all products. Please contact the nearest Apex Tool Group Sales & Service Center for the appropriate facility to handle your service requirements. Additionally, you can find our regional distributor network on our European website www.apexpowertools.eu.

Germany Apex Tool Group GmbH & Co. OHG Industriestrasse 1 73463 Westhausen Phone: 0049 7363 810 Fax: 0049 7363 81222 E-Mail: info@apexpowertools.eu	France Apex Tool Group S.A.S. 25 Avenue Maurice Chevalier 77330 Ozoir-la-Ferrière Phone: 0033 1 6443 2200 Fax: 0033 1 6443 1717 E-Mail: verite-ozoir@apextoolgroup.net	England Apex Tool Group GmbH & Co. OHG UK Field Sales Pit Hills, Piccadilly, Tamworth Staffordshire B78 2ER Phone: 0044 1827 874128 Fax: 0044 1827 874128	Hungary Apex Tool Group Hungária Kft. Platánia u. 2 Pf: 640 9027 Győr Phone: 0036 9666 1383 Fax: 0036 9666 1135	Italy Apex Tool S.r.l. Viale Europa, 80 20090 Cusago (MI) Phone: 0039 2903 310215 Fax: 0039 2903 94231
--	---	--	--	--

